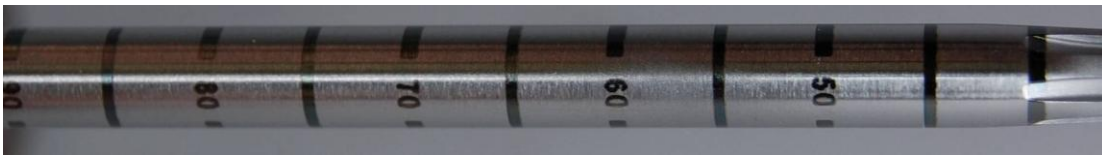


MLPC Continues to Grow

MIAMISBURG, Ohio—August 15, 2008—Recently, Mound Laser & Photonics Center, Inc. (MLPC) reached two milestones with the addition of its tenth laser system and the hiring of its twenty-fifth employee. “We had one laser system and a lot of ambition to grow six years ago. Today we have exceeded our goals and have our sights on growing to 50 people in the next 5 years.” stated Dr. Larry Dosser. Near the end of April, MLPC expanded its laser marking capabilities by adding a 4-axis fully integrated diode-pumped system. This leading edge laser marking system excels at dark marking precision 3-D components. A sample mark is show below:



MLPC has also added its fourth laser welding system and a high speed fiber laser welding capability. The addition of these three systems plus the company's existing capability provides MLPC customers with access to ten state-of-the-art laser tools, which can be found no where else in the United States.

MLPC has also hired its twenty-fifth employee, which further enhances the technical staff. The new employee is a graduate from The Ohio State University in Mechanical Engineering and will be taking on the role of a Project Engineer.

Contact

Lauren Goodman
Sales & Marketing Specialist
937.865.3312
laurengoodman@mlpc.com

